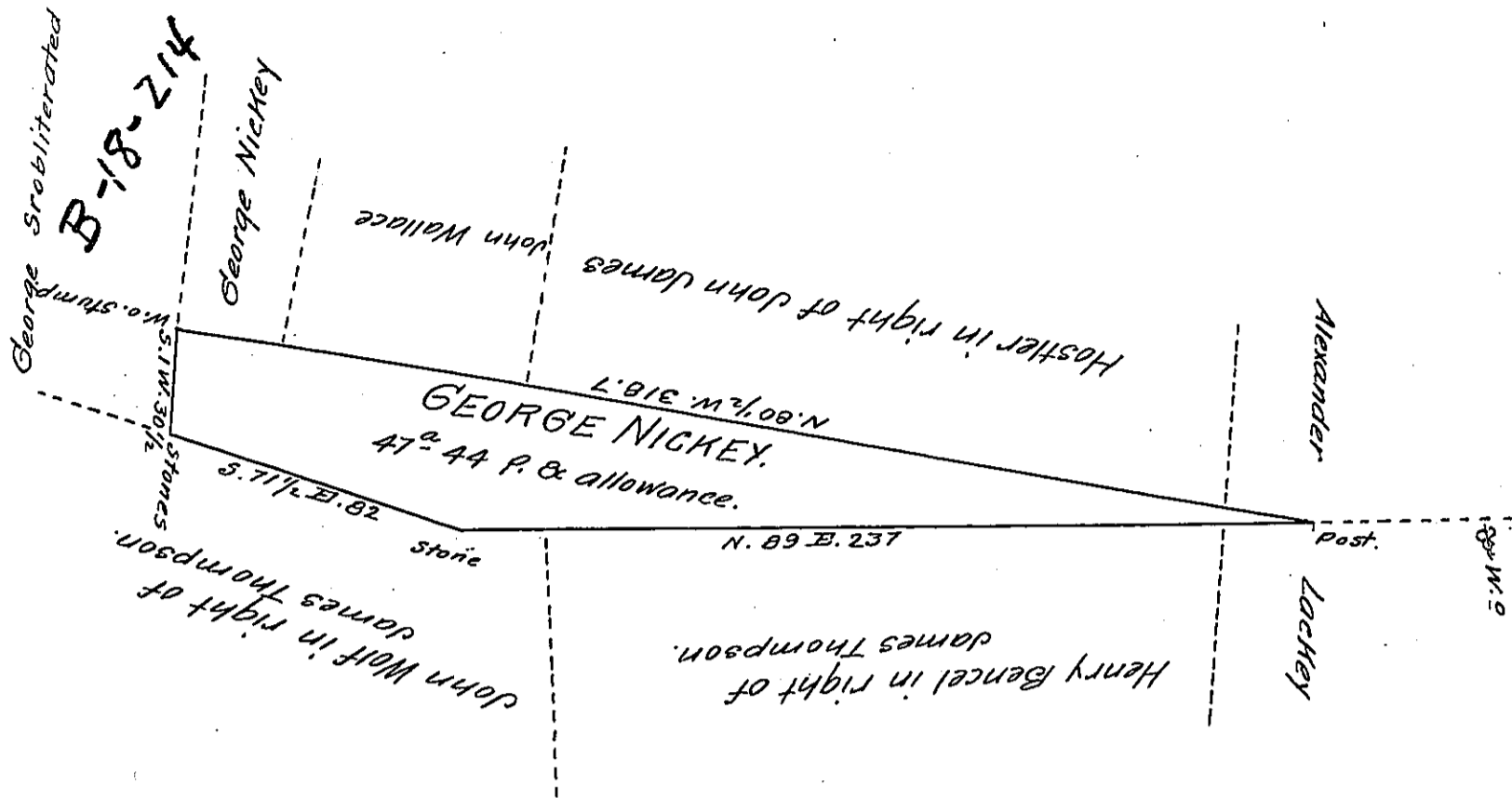


FORM NO. 1.



*Draught of a tract of land situate in Rye Township Perry County
 Containing Forty seven acres 44 P. & allowance of Six per Cent for roads
 &c. Surveyed June 24th 1833 on a warrant granted to George Nickey
 dated June 21 1833 for 43^{ac}*

P^t W^m Wilson D.S.

John Taylor Esq. S.G.

*IN TESTIMONY that the above is a copy of the original remaining on file in
 the Department of Internal Affairs of Pennsylvania, made
 conformably to an Act of Assembly approved the 16th day of
 February, 1833, I have hereunto set my Hand and caused
 the Seal of said Department to be affixed at Harrisburg,
 this Seventeenth day of April 1906*

Geo. R. Brown
 Secretary of Internal Affairs.